

# Always the right performance



## MP47 Hectorra 3

For middle-class and luxury vehicles and SUVs

- ▶ High level of driving safety in the wet
- ▶ Good handling and shorter braking distances
- ▶ Increased mileage
- ▶ Reduced noise

# MP47 Hectorra 3

For middle-class and luxury vehicles and SUVs

## Technical Highlights



### High level of driving safety in the wet

Four wide grooves around the circumference hold a tremendous volume of water, improving its displacement. Driving safety is improved on wet roads and the risk of aquaplaning is reduced.



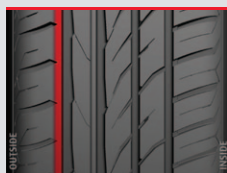
### Good handling and shorter braking distances

Rigid blocks and ribs in the centre improve the transfer of traction and braking forces to the road. This results in a direct steering response. On dry roads the handling is good and braking distances are short.



### Increased mileage

The tread pattern has been optimised in terms of the distribution of material and rigidity between the tread elements. Abrasion is reduced as a result of the even pressure distribution on the contact area. This leads to increased mileage and tyre life.

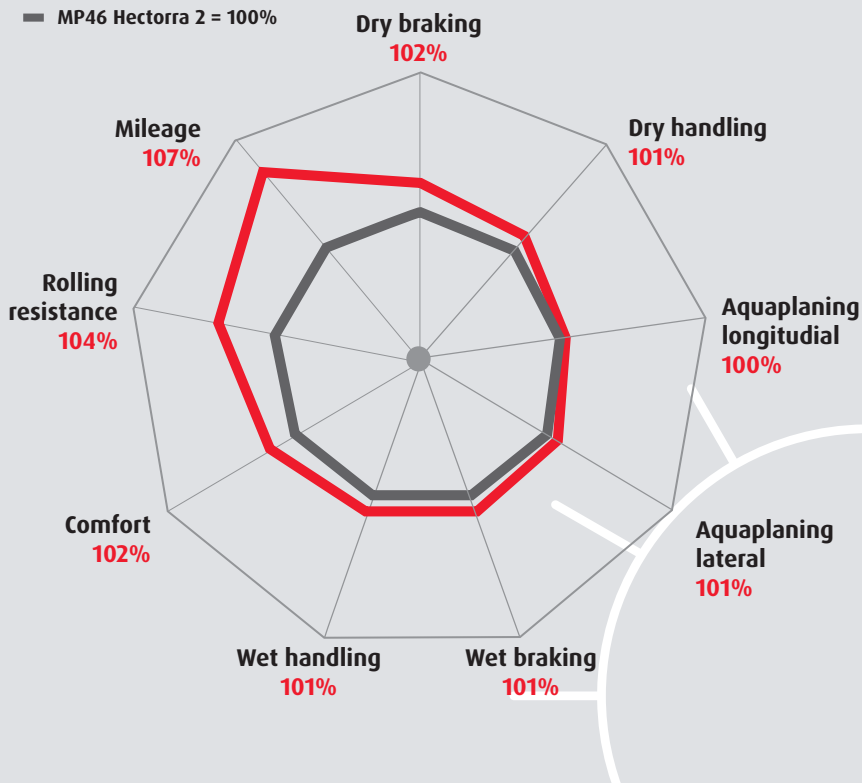


### Reduced noise

The noise emissions caused by tread elements in the centre of the contact area are reduced as a result of the closed outer shoulder. This reduction in noise enhances the tyre's driving comfort.

## Performance Diagram

- MP47 Hectorra 3
- MP46 Hectorra 2 = 100%



## Size Range

Size	LI	SI	EU tyre label				
			Fuel consumption	Wet grip	dB	Class	Rim protection
<b>14"</b>							
185/55R14	80	H	E	C	70	2	
<b>15"</b>							
185/55R15	82	H	E	C	70	2	
185/55R15	82	V	E	C	70	2	
195/55R15	85	H	E	C	71	2	
195/55R15	85	V	E	C	71	2	
195/50R15	82	H	E	C	71	2	
195/50R15	82	V	E	C	71	2	
<b>16"</b>							
195/55R16	87	H	E	C	71	2	
195/55R16	87	V	E	C	71	2	
205/55R16	91	H	E	C	71	2	
205/55R16	91	V	E	C	71	2	
205/55R16	91	Y	E	C	71	2	
205/55R16XL	94	V	E	C	72	2	
215/55R16	93	Y	E	C	71	2	
215/55R16XL	97	H	E	C	72	2	
215/55R16XL	97	Y	E	C	72	2	
225/55R16	95	V	E	C	71	2	
225/55R16	95	Y	E	C	71	2	
225/55R16XL	99	Y	E	C	72	2	
205/50R16	87	V	E	C	71	2	
205/50R16	87	Y	E	C	71	2	
225/50R16	92	Y	E	C	71	2	
205/45R16	83	Y	E	C	71	2	
<b>17"</b>							
205/55R17XL	95	V	E	C	72	2	
215/55R17XL	98	Y	E	C	72	2	
225/55R17XL	101	Y	E	C	72	2	
205/50R17XL	93	V	E	C	72	2	
205/50R17XL	93	Y	E	C	72	2	
215/50R17XL	95	W	E	C	72	2	
225/50R17XL	98	V	E	C	72	2	
225/50R17XL	98	Y	E	C	72	2	
215/45R17XL	91	Y	E	C	72	2	
225/45R17	91	Y	E	C	71	2	
225/45R17XL	94	Y	E	C	72	2	
235/45R17XL	97	Y	E	C	72	2	
245/45R17	95	Y	E	C	71	2	
205/40R17XL	84	Y	E	C	72	2	
215/40R17	83	Y	E	C	71	2	
245/40R17	91	Y	E	C	71	2	
<b>18"</b>							
225/40R18XL	92	Y	E	C	72	2	
245/45R18XL	100	Y	E	C	72	2	
235/40R18	91	Y	E	C	71	2	
235/40R18XL	95	Y	E	C	72	2	
245/40R18XL	97	Y	E	C	72	2	
255/35R18XL	94	Y	E	C	73	2	
265/35R18	93	Y	E	C	72	2	
<b>19" - 20"</b>							
245/40R19XL	98	Y	E	C	72	2	
255/40R19XL	100	Y	E	C	73	2	
225/35R19XL	88	Y	E	C	72	2	
235/35R19XL	91	Y	E	C	72	2	
245/35R19XL	93	Y	E	C	72	2	
255/35R19XL	96	Y	E	C	73	2	
265/30R19XL	93	Y	E	C	73	2	
245/40R20	95	Y	E	C	71	2	
245/35R20XL	95	Y	E	C	72	2	
255/35R20XL	97	Y	E	C	73	2	
<b>SUV</b>							
<b>17"</b>							
235/55R17XL	103	V	E	C	72	2	
<b>18"</b>							
225/55R18	98	V	E	C	71	2	
235/55R18	100	V	E	C	71	2	
255/55R18XL	109	Y	E	C	73	2	
235/50R18XL	101	V	E	C	72	2	
<b>19"</b>							
255/55R19XL	111	V	E	C	73	2	
255/50R19XL	107	Y	E	C	73	2	
285/45R19XL	111	Y	E	C	75	2	
<b>20" - 21"</b>							
275/40R20XL	106	Y	E	C	73	2	
295/35R21XL	107	Y	E	C	75	2	

XL = EXTRA LOAD - tyre with increased loadability | LI = Load index | SI = Speed index | EU tyre label categories: = Fuel consumption, = Wet grip, dB = Value in decibels, = Class | = Rim protection