

Ready for all weather conditions



NEW



MP 62 All Weather Evo

For compact-class and middle-class vehicles

- ▶ Enhanced driving stability in any weather
- ▶ Improved braking and traction performance
- ▶ Reduced risk of aquaplaning

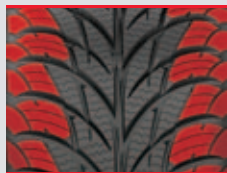
www.matador-tyres.com

MP 62 All Weather Evo

For compact-class and middle-class vehicles

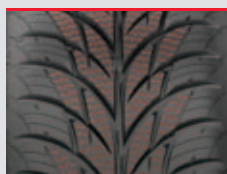


Technical Highlights



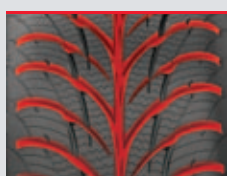
Enhanced driving stability in any weather

The optimised pattern design with stable shoulder blocks increases the pattern stiffness and ensures better steering response on dry roads. This enables controlled handling and driving stability in bends.



Improved braking and traction performance

The winter sipe concept in the centre of the pattern creates additional gripping edges. They shorten braking distances and improve traction performance on snow-covered roads.

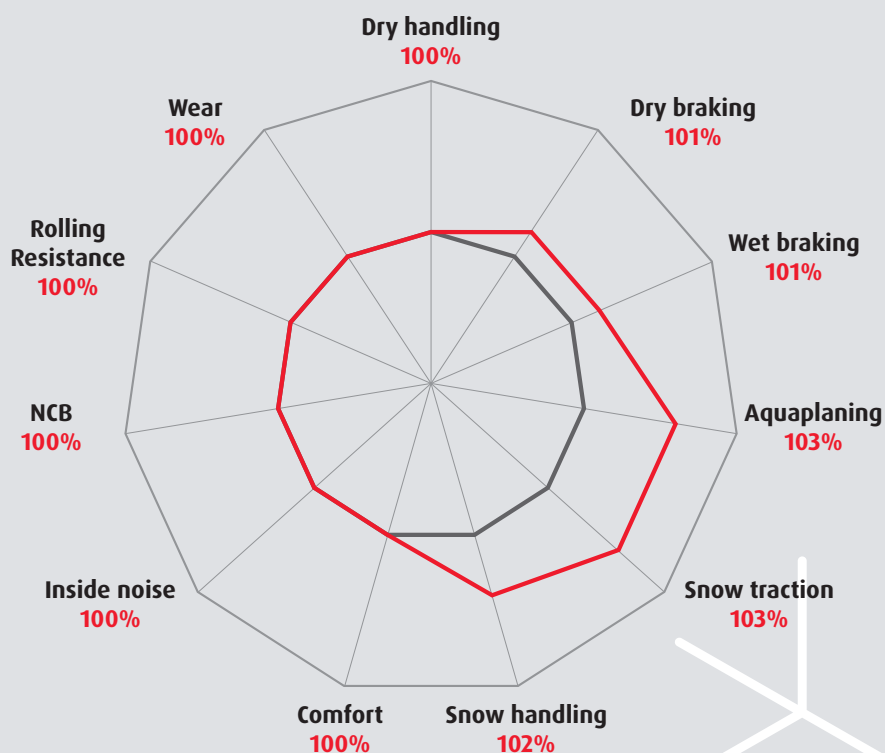


Reduced risk of aquaplaning

The directional pattern with lateral shoulder grooves and the wide longitudinal groove provide efficient water and slush displacement, which means the tyre offers very good aquaplaning resistance.

Performance Diagram

- MP 62 All Weather Evo
- MP 61 Adhessa Evo = 100%



Size Range

Size	LI	SI	EU tyre label			
			🔥	🌧️	dB	🌀
13"						
155/80 R13	79	T	F	C	71	2
155/70 R13	75	T	F	C	71	2
165/70 R13	79	T	F	C	71	2
14"						
165/70 R14	81	T	F	C	71	2
175/70 R14	84	T	E	C	71	2
155/65 R14	75	T	F	C	71	2
165/65 R14	79	T	F	C	71	2
175/65 R14	82	T	F	C	71	2
185/65 R14	86	T	E	C	71	2
185/60 R14	82	T	F	C	71	2
15"						
185/65 R15	88	T	E	C	71	2
195/65 R15	91	H	C	C	72	2
185/60 R15 XL	88	T	E	C	71	2
185/60 R15 XL	88	H	E	C	71	2
195/60 R15	88	H	E	C	72	2
185/55 R15	82	H	E	C	71	2
195/50 R15	82	H	E	C	72	2
16"						
215/65 R16 •	98	H	E	C	72	2
205/60 R16 XL	96	H	E	C	72	2
195/55 R16	87	H	F	C	72	2
205/55 R16	91	H	C	C	72	2
205/55 R16 XL	94	V	C	C	72	2
225/45 R17 XL	94	V	E	C	72	2

XL = EXTRA LOAD - tyre with increased loadability | LI = Load index | SI = Speed index | • = Rim protection
 EU tyre label categories: 🔥 = Fuel consumption, 🌧️ = Wet grip, dB = Value in decibels, 🌀 = Class